

STANDARD DEPARTURE
CHART - INSTRUMENT
(SID) - ICAO

TRANSITION ALTITUDE
10000 FT

ALMATY APPROACH 118.3
ALMATY RADAR 126.8
ALMATY TOWER 119.4
ALMATY ATIS (EN) 129.8
ALMATY ATIS (RU) 135.1

LAKEL 6G

ALMATY
RWY 23L/R

CHANGE: APP FREQ.

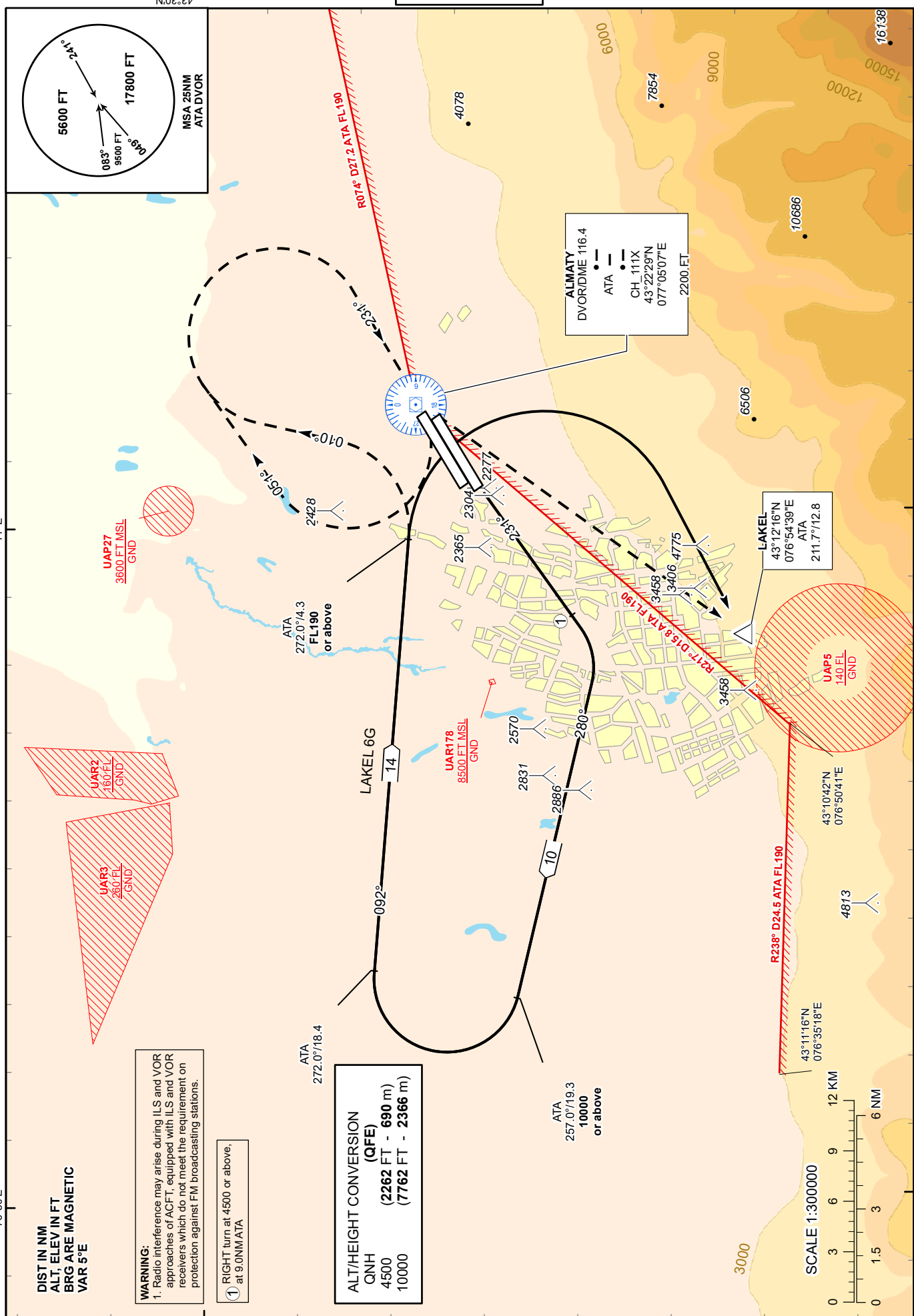
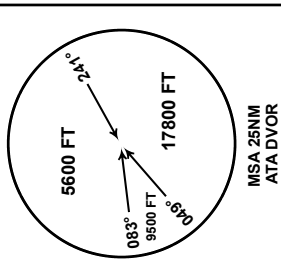
DIST IN NM
ALT, ELEV IN FT
BRG ARE MAGNETIC
VAR 5°E

WARNING:

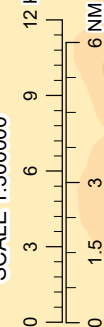
1. Radio interference may arise during ILS and VOR approaches of ACFT, equipped with ILS and VOR receivers which do not meet the requirement on protection against FM broadcasting stations.

① RIGHT turn at 4500 or above,
at 9.0NM ATA

ALT/HEIGHT CONVERSION
(QFE)
QNH
4500 (2262 FT - 690 m)
10000 (7762 FT - 2366 m)



SCALE 1:300000



STANDARD DEPARTURE ROUTES - INSTRUMENT (SID) ALMATY RWY 23 L/R

LAKEL 6G

After take-off climb on track 231° to 4500 FT or above. At 9.0 NM ATA turn RIGHT on track 280° climbing to 10000 FT or above.

After reaching 10000 FT or above, but not further R257.0° D19.3NM ATA, turn RIGHT before intercept R272.0° ATA. Then proceed to ATA climbing FL190 or above(*). After reaching FL190 or above, but not less than 4.3NM to ATA, turn RIGHT to LAKEL R211.7° D12.8NM ATA.

***Remark:** If unable to reach FL190 or above for 4.3NM to ATA, turn LEFT on track 010° to enter holding pattern. Exit from holding pattern to LAKEL at FL190 or above.